

PARTS ARGUMENTER

MAN Genuine filters vs non-OEM filters



Always on the safe side with MAN genuine filters.

Filters are important components for protecting an MAN vehicle against early wear and maintaining engine performance in the long term. Significant damage can be caused if non-OEM filters are used instead of genuine parts, in particular in the case of the engine oil filter. Above all, the quality of the filter material and processing of connection points, such as covers or sealing lips, plays a crucial role here in ensuring that your engine runs smoothly.

✓ Customer benefits at a glance:

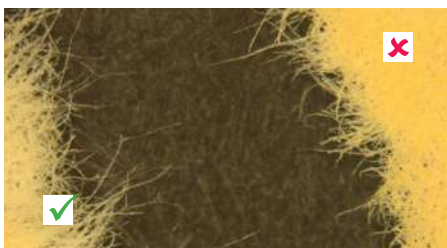
- 100% accurate fit
- Perfect sealing
- Top filter performance due to minimal ingress of dirt
- Excellent engine reliability
- Long overall service life for the engine thanks to prevention of early wear
- Optimum intervals between filter changes
- MAN genuine parts quality for maximum service life

👁 Background information at a glance:

Visible differences in quality: MAN genuine parts versus non-OEM parts

MAN genuine filters undergo extensive testing – not just on test benches but also in real test conditions. In addition, once production has started, feedback from all of the workshops is used to make regular improvements.

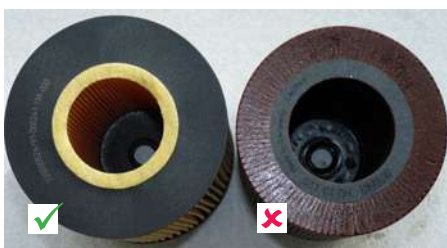
Visible differences in quality: MAN genuine parts versus non-OEM parts



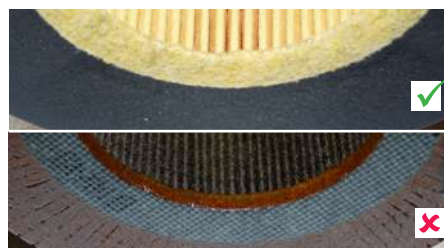
Lack of polyester fibres (long, thin, shiny) reduces filter performance.



A filter with a larger inner diameter does not provide an optimum seal.



Lack of cover disc on the underside and only bonded pleats lead to reduced sealing.



No sealing with felt ring.

Engine oil filters are also available on the independent market. But are they just as reliable as MAN genuine filters?

Does it make a difference if I buy engine oil filters for my MAN vehicle on the independent market and not from MAN?

Yes, a very big difference because these non-OEM filters are not approved by our engine development process. This means that there have been no checks as to whether they comply with the MAN specifications, how well the filtration works and to what extent the filter change intervals recommended by our workshops are applicable for these filters. The quality can therefore vary greatly from MAN Genuine filters.

What exactly are the differences? Aren't filters easy to produce as components?

Product testing of third-party supplier has revealed considerable variations compared with our filters, even though these suppliers included brand-name manufacturers. For example, the dimensions were incorrect or sealing elements were missing, meaning that unfiltered oil was released. They were for example also poorly produced, solid cover discs were replaced with unevenly bonded pleats and economies had been made on the filter medium itself, which can result in problems during use.



What could happen if I do not use MAN Genuine filters?

In engines with damage caused by incorrect filters, unfiltered oil was flushed to the clean side of the oil filter. You can see this from deposits on the cylinder head cover. Sensitive parts of the engine such as the oil-lubricated crankshaft main bearing may be damaged to such an extent that there is catastrophic engine damage, as the connecting rod breaks off and the engine block can no longer be repaired.

What consequences does this type of damage have for me and what can I do?

In case of damages the usage of non-OEM filters can have the consequence that customers lose their right to warranty claims. This means that MAN will not be liable (in causal context). We therefore strongly recommend that you do not use such filters and that you replace them with MAN Genuine filters immediately. Aside from this, you should take action quickly to prevent possible damages from non-approved filters. Affected customers should have the engine checked at the workshop.



Heavy grooves in the engine mount due to particles in the oil circuit.

Heavy grooves on the crankshaft due to particles in the oil.

Last updated: 09/2019. Text and illustrations non-binding. Subject to changes. All data in this publication was up to date at the time of printing.